



Base Guide

Our three main bases at RAF Air UK are :

UGSB – Batumi – Used for the Flight Training School

XRMF – Mozdok – Used for the Operational Conversion Unit

UG5X – Kobuleti – Home of 41 Sqn

At present we use simple weather and therefore the active runways do not change from mission to mission or during a flight.

Below you will find Parking Maps, Taxi Maps & Aerodrome Charts for all three main airfields.

Please note the following active runways are in use for all departures and arrivals until further notice:

Batumi = Runway 12

Mozdok = Runway 08

Kobuleti = Runway 07

Batumi – UGSB – FTS – Active 12

Runway Heading = 119

Runway Elevation = 33 ft

Tower Frequency = 131.0

ILS = 110.30

TACAN = 16X “BTM”

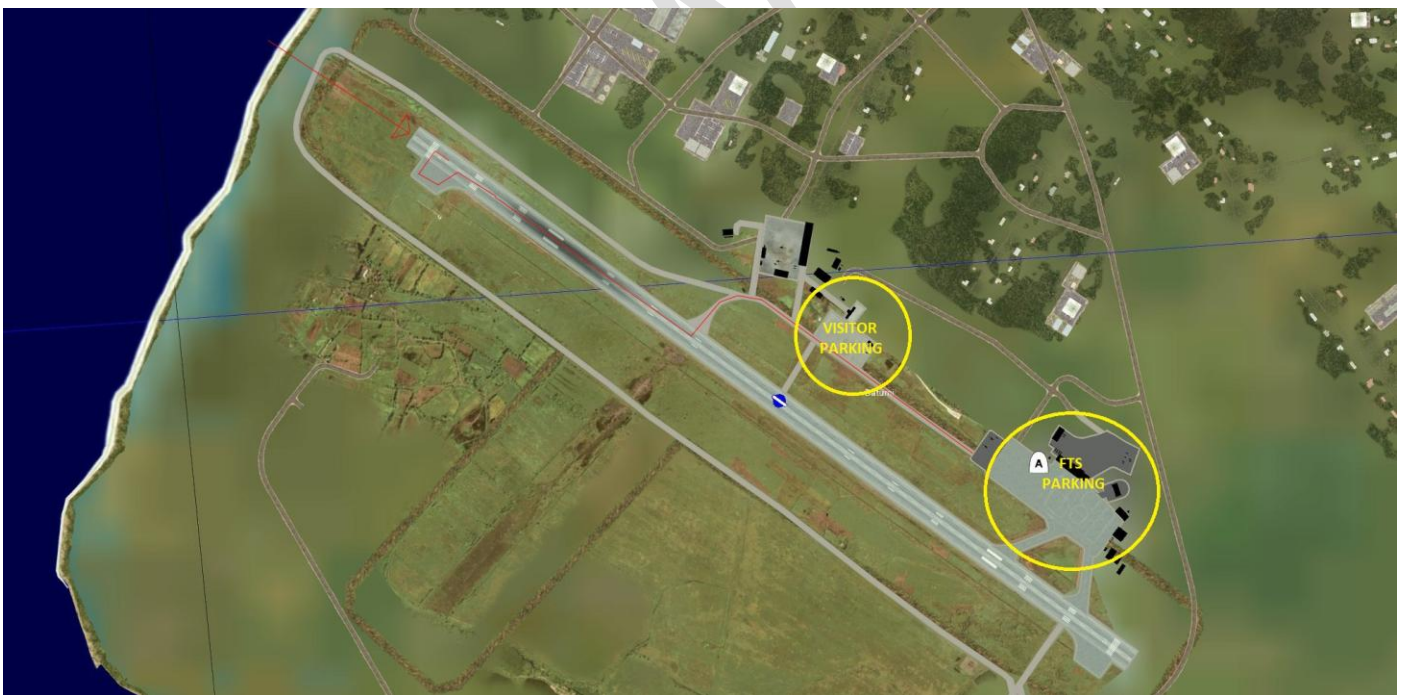
Altimeter Pressure Setting = 2991

Parking Area's In Yellow

Taxi Route In Red

FTS Parking = Apron 1

Visitor Parking = Apron 2

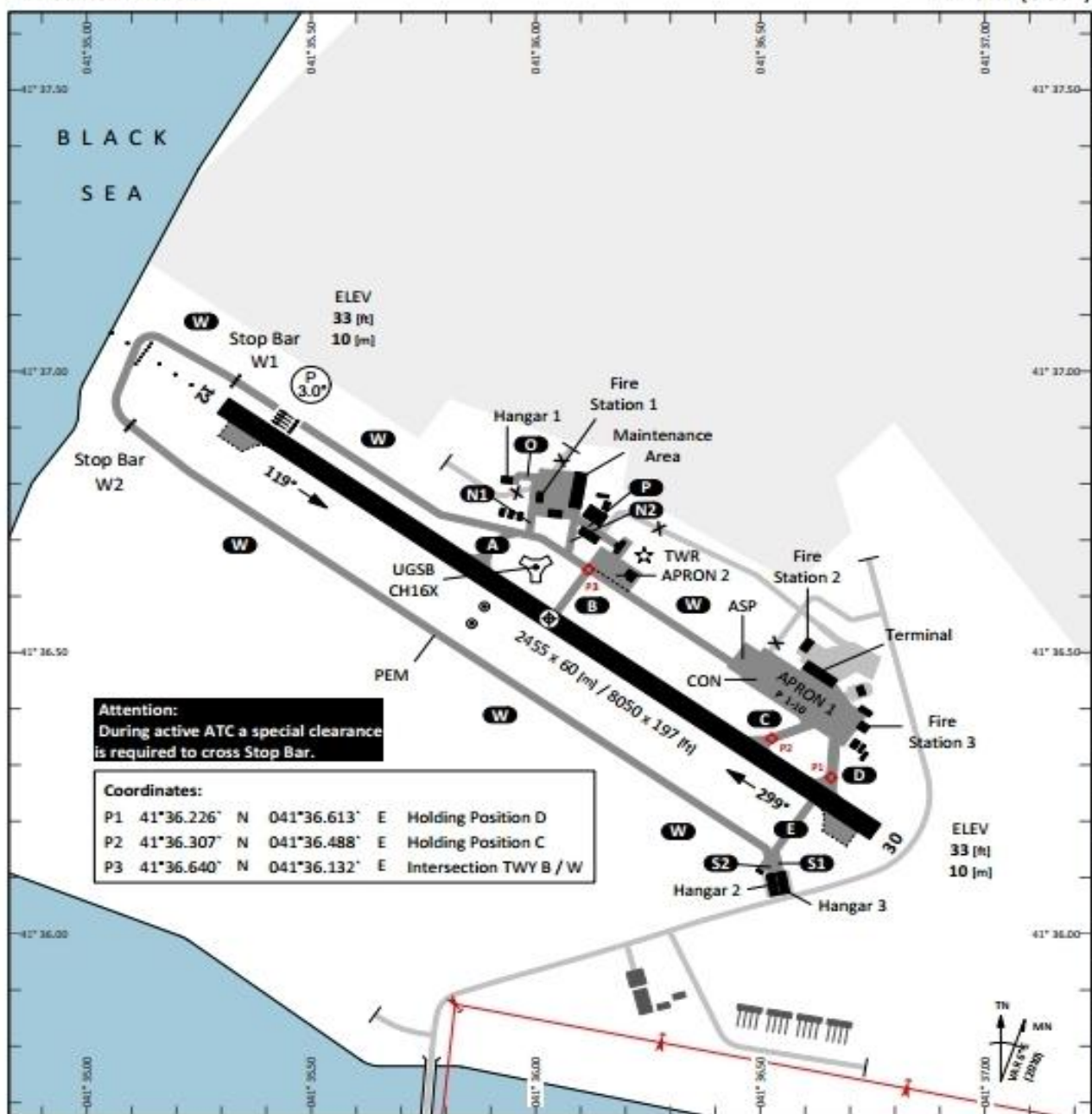


TERPS
AERODROME CHART

GND 07

- 17 -

BATUMI (UGSB)



PAR	RWY	CAT	MINIMA	ARP	ELEV	Scale 1:18'000
12	12	A B C D E	233 - 0.8 200 (200-0.8/L6) GS 3"	41° 36.562' N 041° 36.034' E	33 [ft] 10 [m]	0 200 400 600 [m] 0 500 1000 1500 2000 [ft]
SRA	12 - 30	A B C D E	383 - 1.2 350 (350-1.2/L6)			

RWY	TORA	TODA	ASDA	LDA	PSN THR	ALS
12	8050 [ft] 2455 [m]	8050 [ft] 2455 [m]	8050 [ft] 2455 [m]	8050 [ft] 2455 [m]	41°36.995'N 041°35.378'E	(X)
30	8050 [ft] 2455 [m]	8050 [ft] 2455 [m]	8050 [ft] 2455 [m]	8050 [ft] 2455 [m]	41°36.127'N 041°36.694'E	

Tower	Radar	Final - Precision	TACAN	ILS RWY 12		
131.000 MHz			16X "BTM"	110.30 MHz		

AERODROME CHART

BATUMI (UGSB)

Mozdok – XRMF – OCU – Active 08

Runway Heading = 076

Runway Elevation = 508 ft

Tower Frequency = 137.0

ILS = N/A

TACAN = N/A

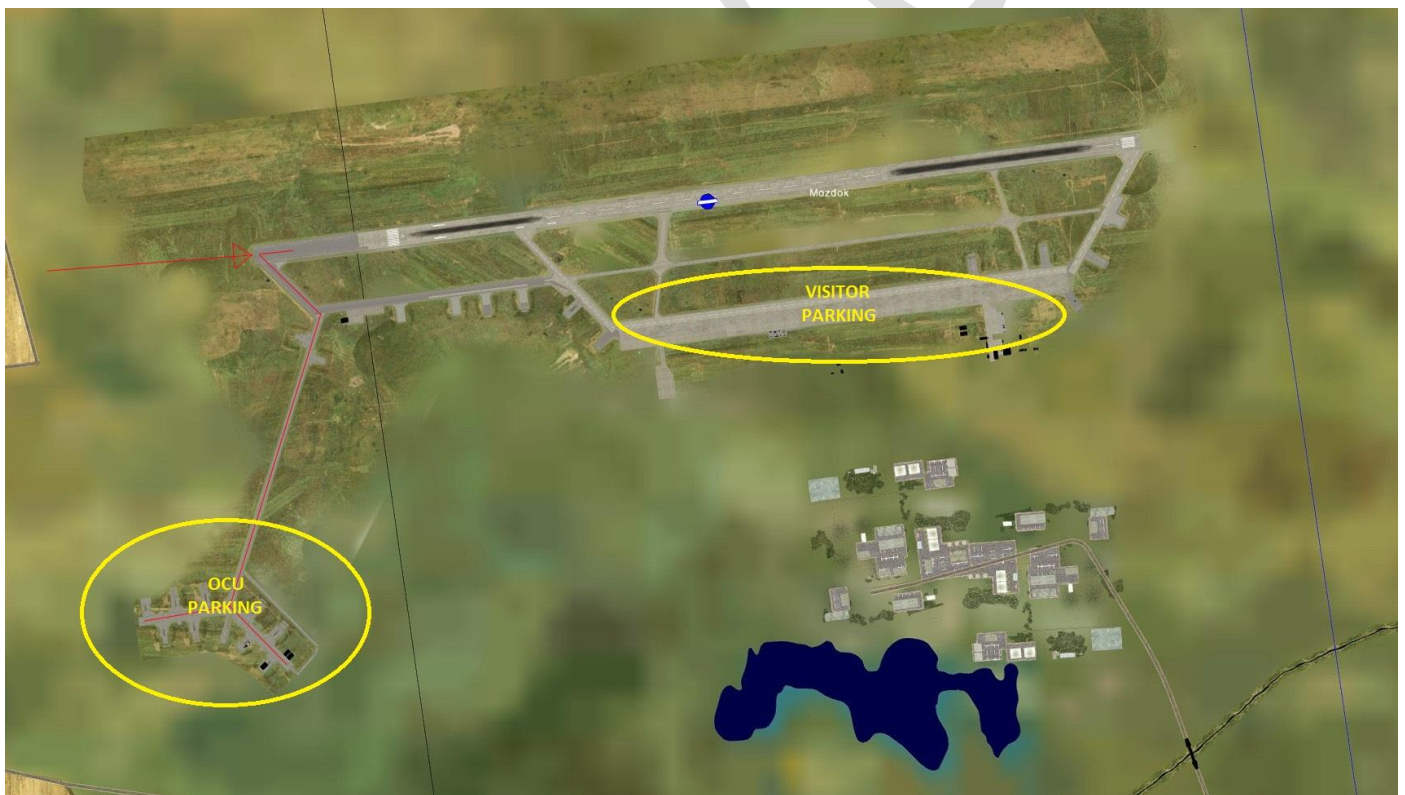
Altimeter Pressure Setting = 2993

Parking Area's In Yellow

Taxi Route In Red

OCU Parking = Ramp South

Visitor Parking = Ramp 2

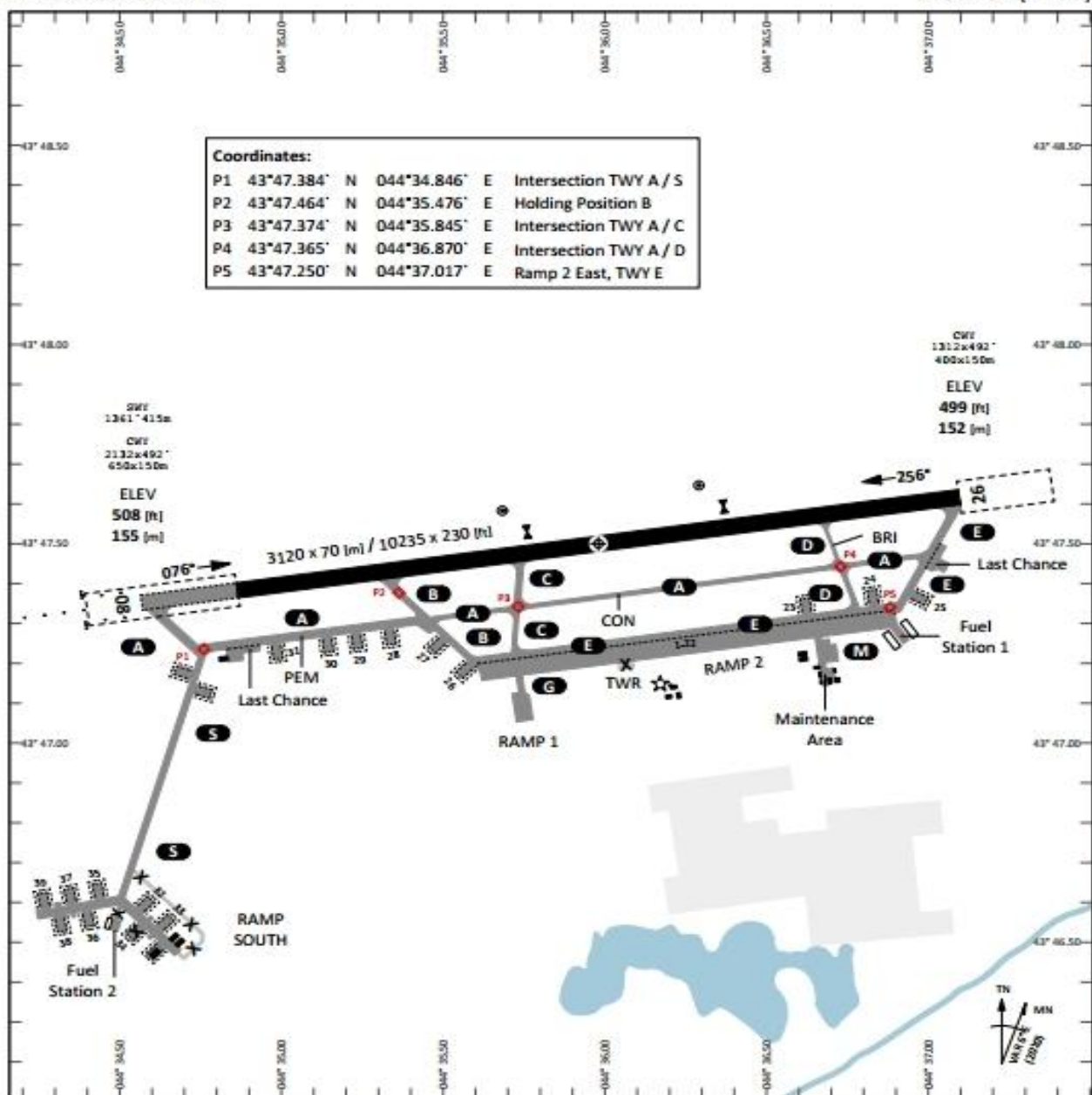


TERPS
AERODROME CHART

GND 21

- 34 -

MOZDOK (XRMF)



PAR	RWY	CAT	MINIMA	ARP	ELEV	Scale 1:25'000
08 - 26	08 - 26	A B C D E	708 - 0.8 200 (200-0.8/1.6) GS 3"	43° 47.504' N 044° 35.981' E	508 [ft] 155 [m]	0 200 400 600 800 [m] 0 1000 2000 [ft]
SRA	08 - 26	A B C D E	858 - 1.2 350 (350-1.2/1.6)			

RWY	TORA	TODA	ASDA	LDA	PSN THR	ALS
08	10235 [ft] 3120 [m]	11545 [ft] 3520 [m]	10235 [ft] 3120 [m]	10235 [ft] 3120 [m]	43°47.514'N 044°34.984'E	(E)
26	10235 [ft] 3120 [m]	12365 [ft] 3770 [m]	11595 [ft] 3535 [m]	10235 [ft] 3120 [m]	43°47.495'N 044°37.279'E	

Tower	Radar	Final - Precision	TACAN	ILS		
137.000 MHz						

AERODROME CHART

MOZDOK (XRMF)

Kobuleti – UG5X – 41 Sqn – Active 07

Runway Heading = 064

Runway Elevation = 59 ft

Tower Frequency = 133.0

ILS = 111.50

TACAN = 67X “KBL”

Altimeter Pressure Setting = 2990

Parking Area's In Yellow

Taxi Route In Red

41 Sqn Parking = HAS Site North

Spare Parking = HAS Site South

Visitor Parking = Apron South

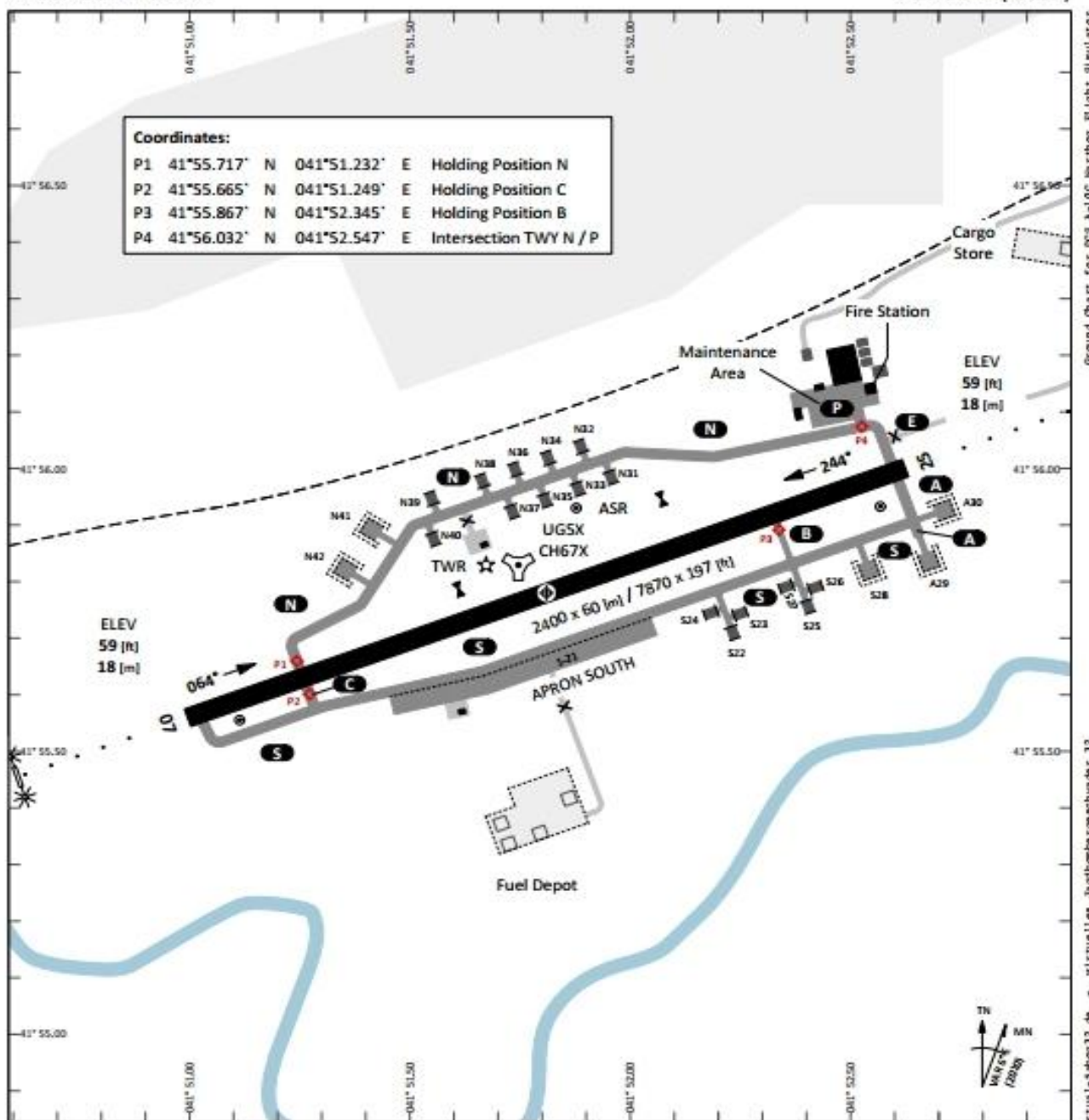


TERPS
AERODROME CHART

GND 01

- 09 -

KOBULETI (UG5X)



	RWY	CAT	MINIMA	ARP	ELEV	Scale 1:18'000
PAR	07-25	A B C D E	259-0.8 200 (200-0.8/1.6) GS 3"	41° 55.797' N	59 [ft]	0 200 400 600 [m]
SRA	07-25	A B C D E	409-1.2 350 (350-1.2/1.6)	041° 51.809' E	18 [m]	0 500 1000 1500 2000 [ft]

RWY	TORA	TODA	ASDA	LDA	PSN THR	ALS
07	7870 [ft] 2400 [m]	7870 [ft] 2400 [m]	7870 [ft] 2400 [m]	7870 [ft] 2400 [m]	41°55.640'N 041°50.975'E	⊕
25	7870 [ft] 2400 [m]	7870 [ft] 2400 [m]	7870 [ft] 2400 [m]	7870 [ft] 2400 [m]	41°55.952'N 041°52.642'E	⊕

Tower	Radar	Final - Precision	TACAN	ILS RWY 07		
133.000 MHz			67X "KBL"	111.50 MHz		

AERODROME CHART

KOBULETI (UG5X)